



# SL/TL SERIES

SL660E-L 66HP  
SL750E-LQ 74HP  
SL750E-LQF 74HP  
TL750E-LQF 74HP



DESIGNED FOR THOSE  
WHO VALUE **COMFORT & SAFETY**  
IN EVERY WORK



KIOTI SL/TL is engineered with a clear priority: operator comfort and safety. Every detail from ergonomic controls to built-in safety systems is designed to reduce fatigue and protect the operator throughout any job.

## OPERATION COMFORT



# EFFORTLESS CONTROL, MAXIMUM PRECISION

Designed for intuitive, precise control,  
even during demanding, repetitive tasks.



### Precision Pilot Joystick

Precision handling in one hand  
The Hydraulic Pilot and Multi-Function Joysticks deliver intuitive, responsive control for precise operation, even in tight spaces. They reduce operator fatigue and improve efficiency, helping tasks get done faster and more comfortably.



### Digital Display

Stay informed at a glance  
The intuitive color display shows fault codes, error messages, rearview camera feed, and maintenance hour tracking. Operators can monitor the machine in real time from inside the cab for efficient maintenance and safe operation.



### Self-Leveling System

Stays level as you lift  
With a flip of a switch, the self-leveling feature keeps the bucket level while lifting, reducing spillage. No more manual adjustments, making lifting easier and more efficient.



### Engine Speed Control

Get the right power for every task  
The rotary control maintains a fixed engine speed for consistent work, while the foot pedal adjusts RPM for responsive performance during variable workloads.



### Quick Attach

Attachments changed in a snap  
Switch attachments without leaving the cab. The hydraulic quick coupler lets you change attachments with the push of a button, minimizing downtime.

## OPERATOR SAFETY



# SAFETY BUILT IN

Integrated safety features protect the operator in both normal operation and unexpected situations.



### Sliding Overhead Door

**Safe and easy entry**  
The overhead sliding door allows for swift entry and exit, enhancing efficiency. It securely locks open—no removal needed—and closes smoothly, letting operators fully enjoy the cab's climate control.



### Control Interlock System

**No seat, no start**  
With the Control Interlock System, travel and operation are only enabled when all seat bars are fully lowered, minimizing the risk of unintended control activation.



### Escort System

**Lighting your way**  
The front and rear work lights stay on for 30 seconds after engine shutdown, improving visibility and safety as the operator exits in low-light conditions.



### Emergency Escape

**Your emergency way out**  
The rear window doubles as a secondary exit, giving operators an emergency escape route if the front exit is blocked.



### Lift Arm Bypass

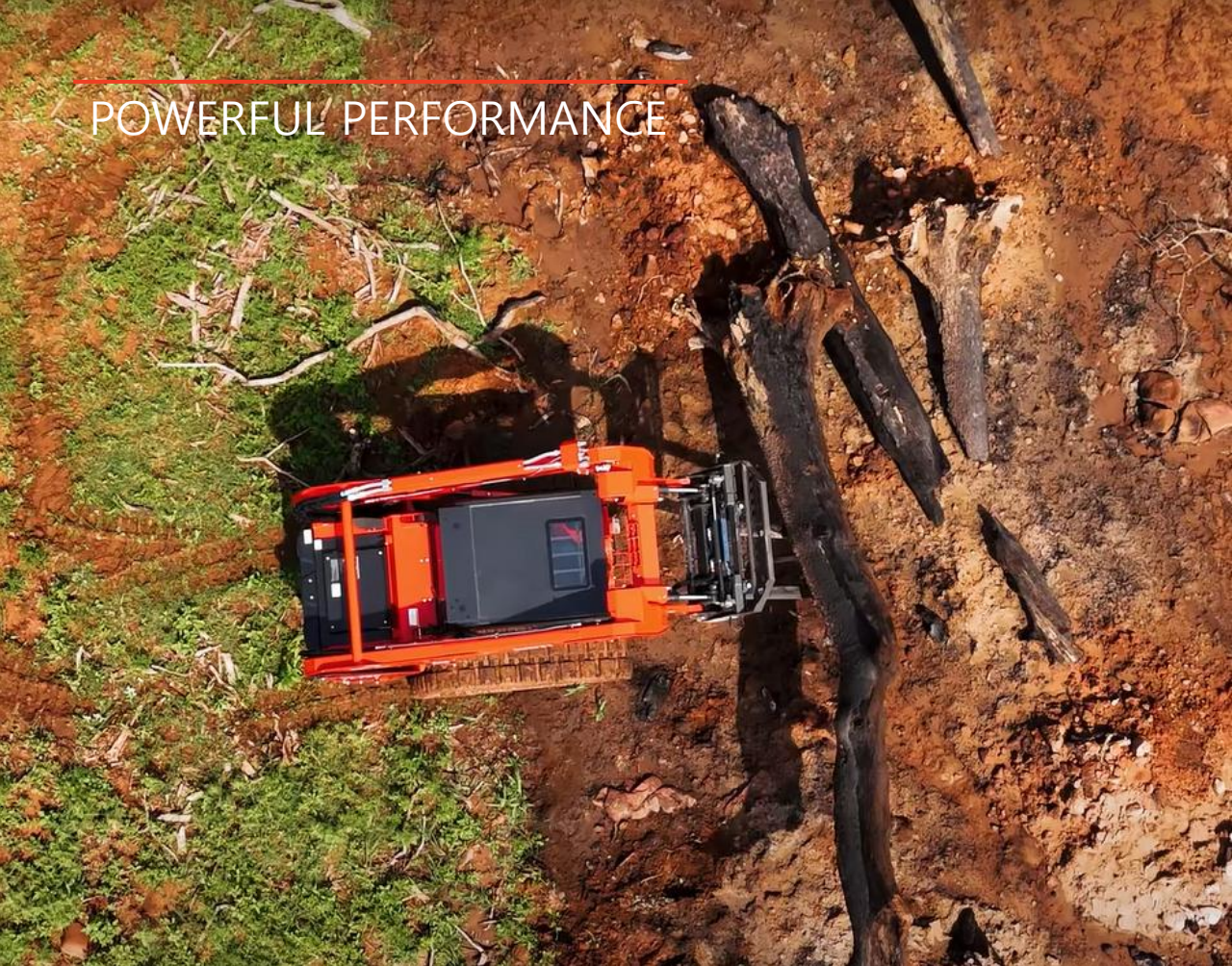
**Safe lowering in emergencies**  
A Boom Down button on the lower left of the cab allows safe lowering of the lift arms, even when the machine is off or in emergencies.



### Rear View Camera

**Safety, even behind you**  
Comes standard with a rearview camera integrated into the in-cab digital display. It provides a clear view when reversing and can be activated anytime with a button—unlike many competitors where it's only an optional feature.

## POWERFUL PERFORMANCE



# STRONGER, FASTER, HIGHER

Delivering strong hydraulics, reliable lift,  
and traction to handle heavy-duty tasks with ease.



### Flow+

Hydraulics, powered up  
Flow+ auxiliary hydraulics deliver enhanced power for light to medium-duty tasks, providing an efficient and cost-effective alternative to traditional high-flow systems.



### Lift Height

Reach higher, work smarter  
Excellent lift height of 3.2m allows operators to dump over tall obstacles and into high-sided trucks, hoppers, and mixers. The vertical lift path provides greater reach at truck-bed height for efficient material handling.



### Ride Control

Smooth rides, secure loads  
Ride Control cushions the lift arm cylinders over uneven terrain, reducing bounce and preventing material spillage. This delivers a smoother ride, greater efficiency, and improved comfort during long workdays.



### Standard Two-Speed Travel

Switch between precision and speed  
Standard two-speed travel lets operators quickly transition between low-speed precision and high-speed transport, boosting productivity on the jobsite.



### Vertical Lift Path

Lift higher, handle heavier  
The vertical lift path raises the bucket straight up, offering better stability, greater lift height, and improved operating capacity compared to radial lift designs.

## WORKPLACE COMFORT



### Excellent Visibility

Clear view for precise work

*A wide front window offers excellent visibility of buckets or attachments, while the cabin roof window provides a clear view when raising loads above the cab, ensuring safety and efficiency.*



### Outstanding A/C Performance

Comfort all year round

*Optimized airflow through five vents delivers outstanding cooling in summer and heating in winter, while preventing window fog or frost to maintain a clear view in cold weather.*



### LED Work Light

Keep working past sundown

*Front and rear LED work lights enhance visibility in low light conditions, ensuring productivity and safety even during nighttime operations.*

# COMFORT THAT LASTS ALL DAY

Spacious cabin, clear visibility, and all-day climate control for fatigue-free operation.

## TOUGH DURABILITY



# BUILD TO ENDURE THE TOUGHEST JOBS

KIOTI SL/TL is engineered with high-strength components, reinforced structures, and a simplified design that reduces breakdowns.



### Dual Air-Cleaner Elements

Keep your engine clean in dusty conditions.  
*Dual air-cleaner elements provide superior filtration, protecting the engine from dust and debris. This reduces maintenance needs, extends engine life, and keeps your machine working longer.*



### Dual Hinge Front Idler and Triple Flange Rollers

Stability and durability on any terrain  
*Dual flange front idlers and triple flange rollers ensure superior track retention and durability, delivering reliable performance in tough working conditions.*



### Engine Air Intake

Only clean air inside  
*The engine air intake system protects against dust and debris, ensuring clean airflow for optimal performance and extended component life.*



### Lift Arm Protected Hose Routings

Protection where it matters most  
*Hydraulic lines are routed inside the lift arms for superior protection against external impacts, while allowing easy maintenance access.*



### Solid-Mounted Undercarriage

Built solid for less maintenance  
*The rigid undercarriage design features fewer moving parts, reducing maintenance needs while offering excellent grading performance and long-lasting durability.*



### Tilt-up Cabin

Easy access, faster maintenance  
*Gas-spring-supported tilt-up cab provides quick access to service parts, reducing downtime and keeping your machine in peak condition.*

# SPECIFICATIONS

MODEL		SL660E -L	SL750E -LQ	SL750E -LQF	TL750E -LQF
ENGINE					
Manufacturer		Daedong			
Model		4HT5	4HT15		
Engine Gross Power (SAE J1995)	kW(HP)	49.5(66.4)	54.9(73.6)		
Engine Net Power (SAE J1349)	kW(HP)	47(63)	52(69.7)		
Rated revolution	rpm	2,400			
Peak Torque	N-m(lbf-ft)	237(174.8)	274(202)		
Peak Torque rpm	rpm	1,700	1,500		
No.of cylinders		4			
Total displacement	cc(cu in.)	2,435(148)	2,435(148.6)		
Bore	mm(in.)	87(3.4)			
Stroke	mm(in.)	102.4(4.0)			
Turbo Charge		Yes			
Inter Cooler		NO	Yes		

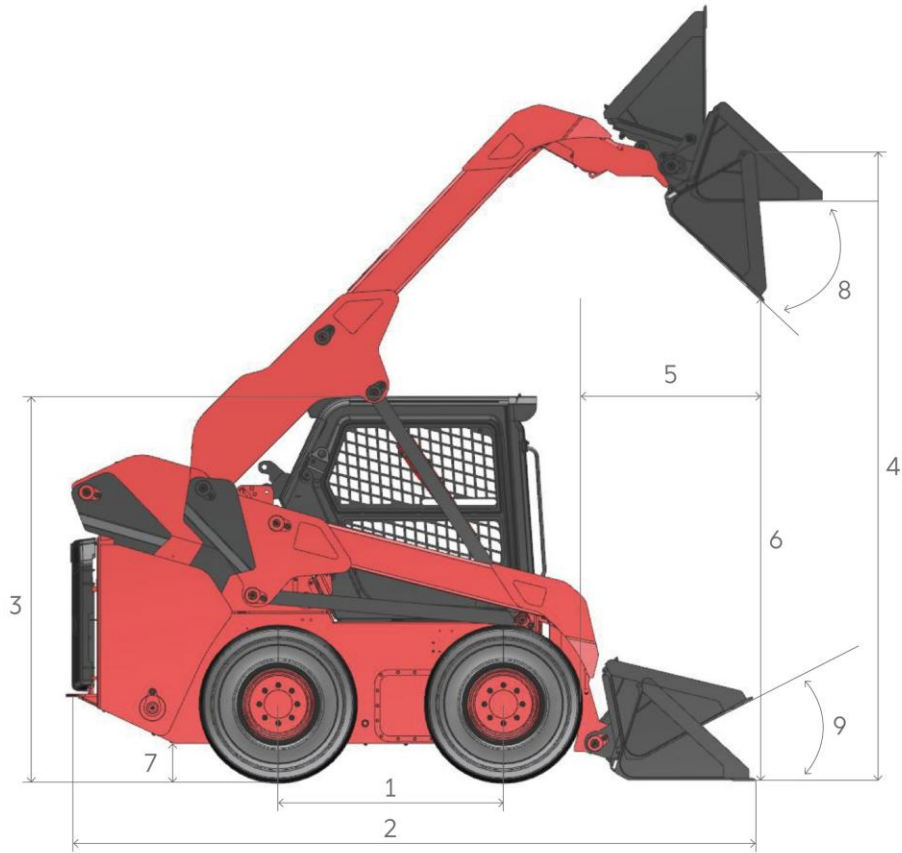
MODEL		SL660E -L	SL750E -LQ	SL750E -LQF	TL750E -LQF
ENGINE					
Fuel tank	ℓ(us gal)	94(24.8)	100(26.4)		
Urea tank	ℓ(us gal)	No			
Engine oil (Filter included)	ℓ(us gal)	9(2.4)			
Engine coolant	ℓ(us gal)	4.2(1.1)(Engine only)			
Engine coolant(Radiator included)	ℓ(us gal)	10.4(2.7)			
Hydraulic tank	ℓ(us gal)	31(8.2)	38(10)		
Chain box, each side	ℓ(us gal)	13(3.4)			-
HYDRAULIC					
Hydraulic Flow – Basic:					
Loader Hydraulic Pressure	Bar(psi)	219(3,176)	230(3,335)		
Loader Hydraulic Flow	lpm(g pm)	64(16.9)	82.9(21.9)		
Hydraulic Power (calculated)	kW(hp)	31.3(23.4)	<b>41.8(31.1)</b>		
Hydraulic Flow – High Flow:					
		N/A		Std	
Loader Hydraulic Pressure	bar(psi)				200(2,900)
Loader Hydraulic Flow	Lpm(g pm)				128.7(34)
Hydraulic Power (calculated)	kW(hp)				<b>56.6(42.2)</b>

# SPECIFICATIONS

MODEL			SL660E -L	SL750E -LQ	SL750E -LQF	TL750E -LQF
POWER TRAIN						
Travel Speed 2-Speed	LOW	Kph (mph)	11.5 (7.1)	11.5 (7.1)		7.5 (4.7)
	HIGH	Kph (mph)	17.3 (10.7)	19.4 (12.1)		11.5 (7.1)
Tire			10-16.5-8PR	12-16.5-12PR		-
OPERATING SPECIFICATIONS						
Operating weight w/ operator		Kg (lb)	3,464 (7,636)	3,916 (8,633)	3,962 (8,735)	4,610 (10,163.3)
Operating weight w/o operator		Kg (lb)	3,389 (7,471)	3,841 (8,468)	3,887 (8,569)	4,535 (9,998)
Rated Operating Capacity	50% Tipping Load	Kg (lb)	885 (1,951)	<b>1,220 (2,690)</b>		-
	35% Tipping Load		-	-		<b>1,043 (2,299)</b>
Rated Operating Capacity with Optional Counterweight(120kg)		Kg (lb)	-	1,285 (2,833)		<b>1,078 (2,377)</b>
Tipping Load		Kg (lb)	1,770 (3,902)	2,440 (5,380)		2,980 (6,570)

MODEL			SL660E -L	SL750E -LQ	SL750E -LQF	TL750E -LQF
OPERATING SPECIFICATIONS						
Breakout Force, Tilt (Bucket)		kg(lb)	1,710 (3,770)			2,500 (5,512)
Breakout Force, Lift		kg(lb)	1,745 (3,847)			2,275 (5,016)
Bucket Capacity	Rated (Std)	m3	0.3			0.33
	Heaped (Std)	m3	0.4			0.44
Lift Arm Path						Vertical
Control						ISO Pilot
CAB						
ROPS						Yes
FOPS						Yes
FOPS Level II						No

# SPECIFICATIONS



MODEL		SL660E -L	SL750E -LQ	SL750E -LQF	TL750E -LQF
DIMENSIONS					
1	Wheelbase	mm(in)	1,710(3,770)	2,500(5,512)	1,435(56.5)
	Length w/o Bucket	mm(in)	2,880(113.4)	2,960(116.5)	2,950(116.1)
2	Length w/Bucket on ground	mm(in)	3,587(141.2)	3,675(114.7)	3,675(144.7)
3	Height to top of Cab(w/ beacon)	mm(in)	2,130(83.9)	2,161(85.1)	2,178(85.7)
	Height to top of Cab(w/o beacon)	°	2,032(80)	2,063(81.2)	2,080(81.9)
	Max Overall Height	mm(in)	3,902(153.6)	4,068(160.2)	4,160(163.8)
4	Hinge Pin Height at max lift	mm(in)	3,057(120.4)	3,215(126.6)	3,310(130.3)
	Hinge Pin Height at carry position	mm(in)	237(9.3)	212(8.3)	203
5	Reach at max lift and dump	mm(in)	950(37.4)	949(37.4)	1,098(43.2)
6	Clearance at max lift and dump	mm(in)	2,265(89.2)	2,473(97.4)	2,585(101.8)
7	Ground Clearance	mm(in)	145(5.7)	195(7.7)	220(8.7)
	Departure Angle	°	25		25
	Bumper Overhang behind rear axle	mm(in)	1,040(40.9)	1,127(44.4)	-
8	Maximum Dump Angle	°	44	42	
	Vehicle Width over tires	mm(in)	1,690(66.5)	1,820(71.7)	1,800(70.9)
	Turning Radius from center — Machine rear	mm(in)	1,654(65.1)	1,788(70.4)	1,709(67.3)
	Turning Radius from center — Coupler	mm(in)	1,422(56)	1,548(60.9)	1,450(57.1)
	Turning Radius from center — Bucket	mm(in)	2,171(85.5)	2,158(85.0)	2,223(87.5)
	Rack Back Angle at max height	°	84.6	88	
	Bucket Pin Reach at Maximum Lift	mm(in)	504(19.8)	414(16.3)	597(23.5)
	Width with bucket (Std)	mm(in)	1,730(68.1)	1,890(74.4)	
9	Rack Back Angle on Ground	°	29		
	Wheel Tread/Track Tread	mm(in)	1,435(56.5)	1,513(59.6)	1,400(55.1)

# SPECIFICATIONS

MODEL		SL660E -L	SL750E -LQ	SL750E -LQF	TL750E -LQF
ENVIRONMENTAL(NOISE LEVEL, VIBRATION)					
Engine Gross Power (SAE J1995)	kW(HP)	49.5(66.4)	54.9(73.6)		
Engine Net Power (SAE J1349)	kW(HP)	47(63)	52(69.7)		
Engine MAX Power	kW(HP)	49.5(66.4)	54.9(73.6)		
Engine RATED Power	kW(HP)	49.5(66.4)	54.9(73.6)		
OPTIONS					
2 speed	Std				
High Flow hydraulics	N/A	Std			
Bucket Self-leveling	Std (Up only)				
AUX hydraulic	Std				
Power quick attach (Hyd.)	N/A	Std			
Ride Control (Shock Absorb)	N/A	Std			
Air condition / Heater	Std				
Suspension seat	Std				
Seat Belt (3 inch)	Std				
Hyd. Oil (VG46)	Std				
Remote Control - ISO	Std				

MODEL		SL660E -L	SL750E -LQ	SL750E -LQF	TL750E -LQF
OPTIONS					
CAB	Std				
Beacon light	Opt				
Side Mirror	Std				
Turn light	Std				
Reflector	Std				
License plate light	Std				
Back Buzzer	Std				
Stop light	Std				
Radio / Blue tooth / USB	Opt				
Tool box	Std				
Work light - Front (LED - 2EA)	Std				
Work light - Rear (LED - 2EA)	Std				
Escort lamp	Std				
Rear View Camera	Std				
Telematics	Std				
Additional Counter Weight	Opt				